



Commercial Property Agents | **01902 425646**

6 Waterloo Road
Wolverhampton, WV1 4BL



Vulcan House, Pendeford Business Park, Wolverhampton, WV9

TO LET

OFFICES

Size
1,472 sq ft (137 sq m)

Rent
£15,000

<http://www.michaeltromans.co.uk/qlink3229>

Location

The property is located to the north of Wolverhampton in close proximity to junction 2 of the M54 and the A449 Stafford Road

Description

Vulcan House is a modern attractive office building providing largely open plan accommodation, and benefitting from central heating, air conditioning, and generous car parking provisions

Accommodation

First Floor 1472 sq ft

Shared WC and wash areas

Service Charge

Will Apply

VAT

Will Apply

Business Rates

To be assessed

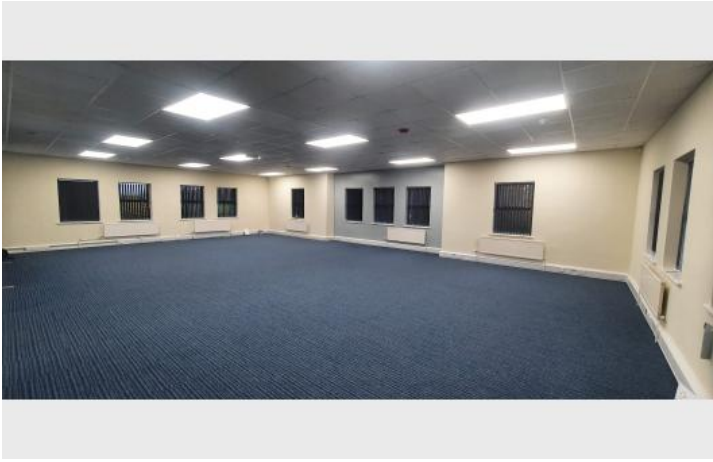
Rent

£16000pa

Viewing

By appointment

Additional Images



Location Map

