



Unit 4 Paganel Industrial Estate, Turner Street, Dudley, DY1 1TX

TO LET

INDUSTRIAL & WAREHOUSE

Size
1,782 sq ft (166 sq m)

Rent
£Let Agreed

Location

The property is located in an established industrial area just outside of Dudley town centre

Viewing

By arrangement with the agents

Subject to contract

Description

The property comprises an end of terrace industrial unit that has just been subject to a refurbishment

The ground floor provides workshop, office, kitchen and toilet areas

The first floor provides a further office

Accommodation

Gross internal areas

| | |
|--------------|---------------------|
| Ground Floor | 1540ft ² |
|--------------|---------------------|

| | |
|--------------------|--------------------|
| First Floor Office | 240ft ² |
|--------------------|--------------------|

| | |
|-------|---------------------|
| Total | 1780ft ² |
|-------|---------------------|

Small forecourt/car park

Lease

The property is available on a new lease

Rent

£8250pa plus VAT

Let Agreed

VAT

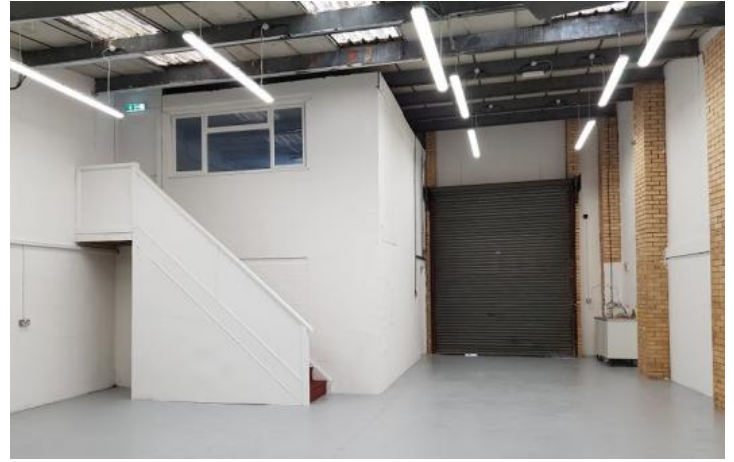
Will apply

EPC

E

MISREPRESENTATION ACT 1967: Michael Tromans & Co. for itself and for the vendors or lessors of this property whose agents they are give notice that are a general outline only for the guidance of intending purchasers or lessees, and do not constitute an offer of contract. All descriptions and any other details are given without responsibility and any intending purchasers or tenants should not rely on them as statements or representations of fact but must satisfy themselves by inspection or otherwise as to the correctness of them. No employee of Michael Tromans & Co. has any authority to make or give any or warranty whatever in relation to this property.

Additional Images



Location Map

