



Commercial Property Agents | **01902 425646**

6 Waterloo Road
Wolverhampton, WV1 4BL



Springvale Street, Willenhall, WV13 1EJ

FOR SALE

INDUSTRIAL & WAREHOUSE

Size
13,711 sq ft (1,274 sq m)

Purchase Price
£750,000

<http://www.michaeltromans.co.uk/qlink3164>

Location

The property is located in a popular industrial area just to the north of Willenhall centre near to the Ashmore Lake business park

Description

The property comprises a development of seven industrial units together with circulation land / car parking

The units are believed to have been constructed in the early 2000s

Some of the units are presently combined

Most of the units are built to an eaves height of 18 ft, with portal frame construction

Accommodation

Unit 1 1355 sq ft

Units 2 - 7 12356 sq ft

Total 13711 sq ft

Site Area , approx 0.8 acres

Business Rates

To be Assessed

Possession

Vacant

VAT

Will not apply

Business Rates

To be assessed

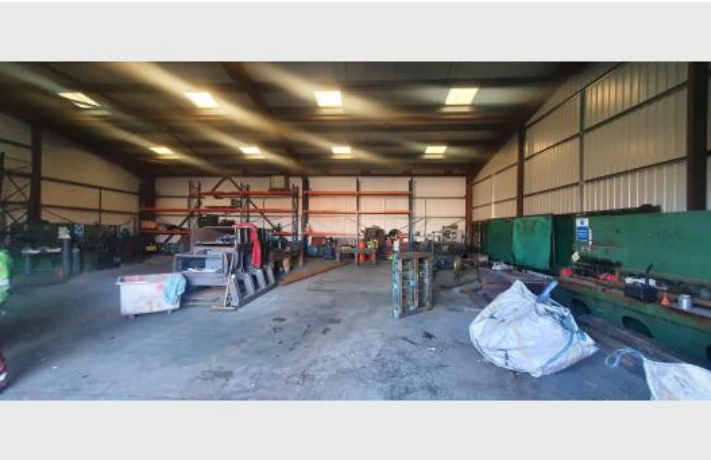
EPC

B

Viewing

By arrangement with Michael Tromans & Co

Additional Images



Location Map

