



Commercial Property Agents | **01902 425646**

6 Waterloo Road
Wolverhampton, WV1 4BL



Regents Court Chambers, George Street, Wolverhampton, WV2

TO LET

OFFICES

Size
264 sq ft (25 sq m)

Rent
£7,140

<http://www.michaeltromans.co.uk/qlink3202>

Location

The property is located within a professional district of Wolverhampton city centre, within a conservation area and close to St John's church

Description

The property is located within the ground floor of an attractive period building.

Accommodation

There are two ground floor offices available

Office A 187 sq ft

Office B 77 sq ft

One car parking space may be available, by negotiation

Communal kitchen, toilets, etc

Licence Fee

Office A and B £595pcm

Includes electric and service charge

VAT

Does not apply

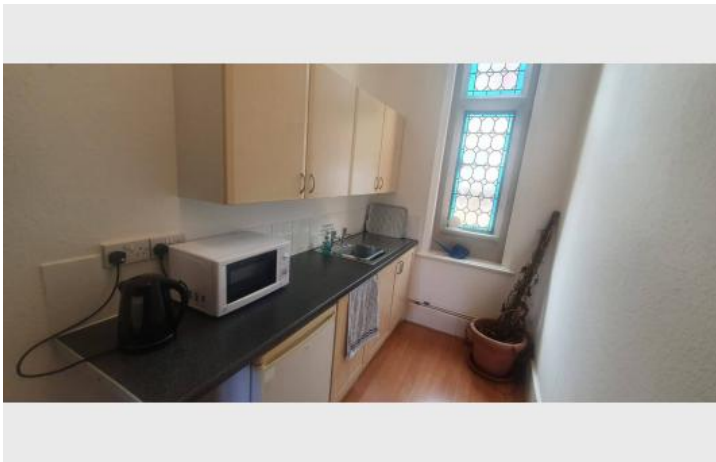
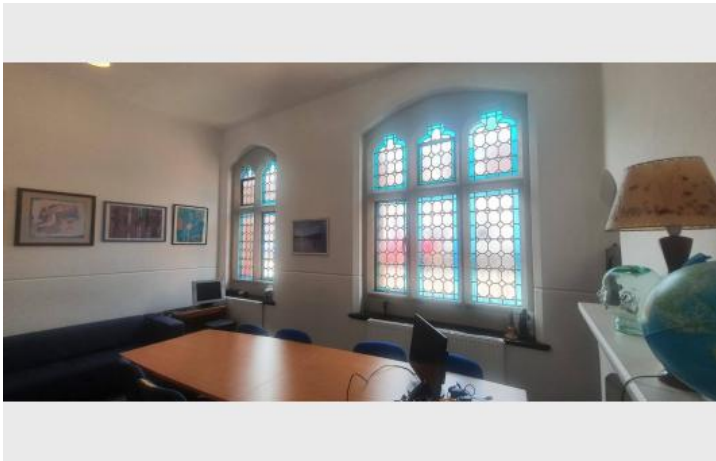
Contract

Licence

Business Rates

To be assessed

Additional Images



Location Map

