



Office Suites, Chubb Buildings, Fryer Street, Wolverhampton,

## TO LET

OFFICES

Rent  
£ROA

Landmark building

Monthly licence

Close to bus/rail stations

## Location

Overlooking Wolverhampton ring road, adjacent to the bus station and opposite the railway station.

## Description

Conversion of character landmark building to high class offices. The site also houses the lighthouse cinema and a bar and cafe.

## Accommodation

### Ground Floor

Suite 2 1373 sq ft

### Second Floor

Suite 27 833 sq ft

### Fourth Floor

K11 613 sq ft

## Monthly Licence Fee

### Ground Floor

Suite 2 £2473 pcm

### Second Floor

Suite 27 £1663 pcm

### Fourth Floor

K11 £1225 pcm

## Business Rates

Rateable Value Suite 2 £12500

Rateable Value Suite 27 £8500

Rateable Value Suite K11 £6300

If you qualify for small business rates relief then you may be able to obtain significant relief from rates charges. Interested parties should verify all the above with the local authority.

<https://www.gov.uk/apply-for-business-rate-relief/small-business-rate-relief>

## Lease / Licence

The units are available on monthly license or lease terms

## VAT

License Fees are subject to VAT, in addition

## Viewing

By arrangement through:

Michael Tromans & Co 01902 425646

tromansandco@aol.com

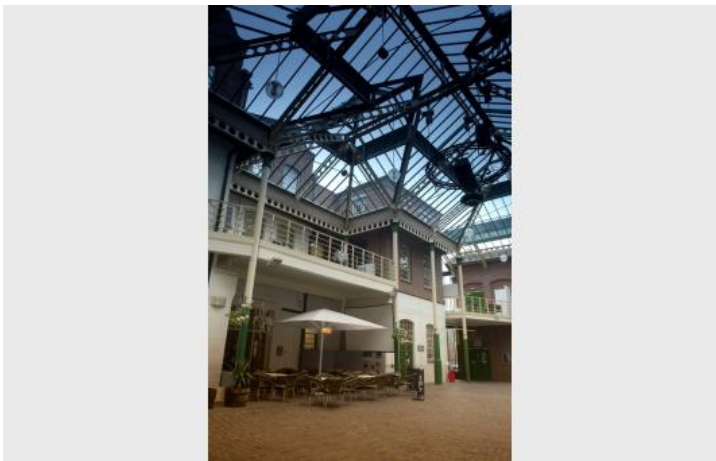
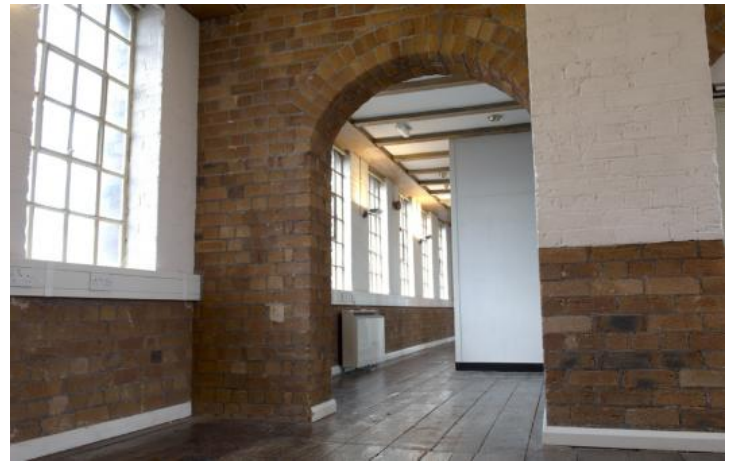
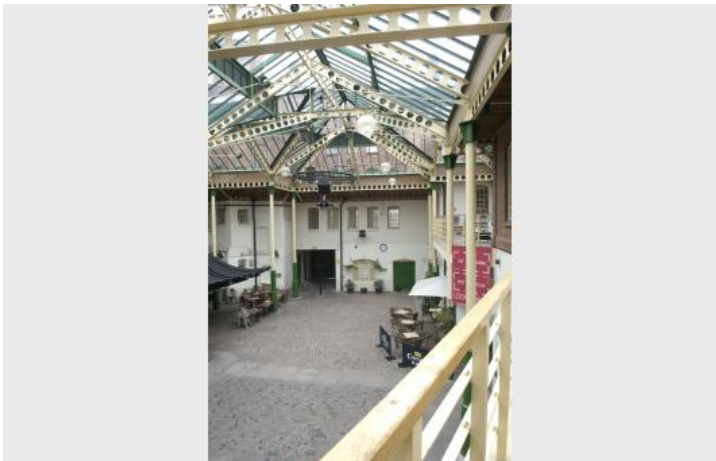
or Prince Warnes Property 0121 200 2210

or MIA Ltd 0121 233 2232

MISREPRESENTATION ACT 1967: Michael Tromans & Co. for itself and for the vendors or lessors of this property whose agents they are give notice that are a general outline only for the guidance of intending purchasers or lessees, and do not constitute an offer of contract. All descriptions and any other details are given without responsibility and any intending purchasers or tenants should not rely on them as statements or representations of fact but must satisfy themselves by inspection or otherwise as to the correctness of them. No employee of Michael Tromans & Co. has any authority to make or give any or warranty whatever in relation to this property.



## Additional Images



## Additional Images

