



Commercial Property Agents | **01902 425646**

6 Waterloo Road  
Wolverhampton, WV1 4BL



Office Suites, Chubb Buildings, Fryer Street, Wolverhampton,

**TO LET**  
OFFICES

Rent  
£ROA

Landmark building

Monthly licence

Close to bus/rail stations

<http://www.michaeltromans.co.uk/qmlink2131>

## Location

Overlooking Wolverhampton ring road, adjacent to the bus station and opposite the railway station.

## Description

Conversion of character landmark building to high class offices. The site also houses the lighthouse cinema and a bar and cafe.

## Accommodation

### First Floor

Suite 18 813ft<sup>2</sup>

Suite 19 916ft<sup>2</sup>

### Fourth Floor

Suite 49 939 ft<sup>2</sup>

One car parking space is provided with each unit

## Monthly Licence Fee

### First Floor

Suite 18 £940

Suite 19 £1085

### Fourth Floor

Suite 49 £1085

License fees are inclusive of service charge

## Business Rates

Rateable Values

Suite 18 - RV £6100

Suite 19 - RV £6800

Suite 49 - RV £6700

If you qualify for small business rates relief then you may be able to obtain significant relief from rates charges. Interested parties should verify all the above with the local authority.

<https://www.gov.uk/apply-for-business-rate-relief/small-business-rate-relief>

## Lease

The units are available on monthly license or lease terms

## VAT

License Fees are subject to VAT

## Viewing

By arrangement through:

Michael Tromans & Co 01902 425646

tromansandco@aol.com

or Prince Warnes Property 0121 200 2210

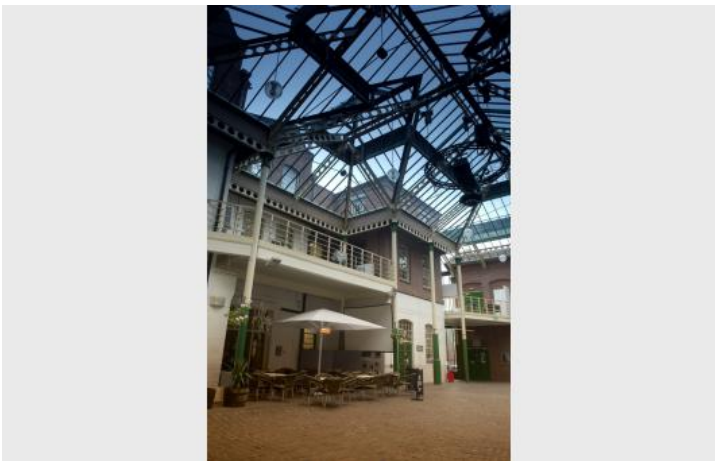
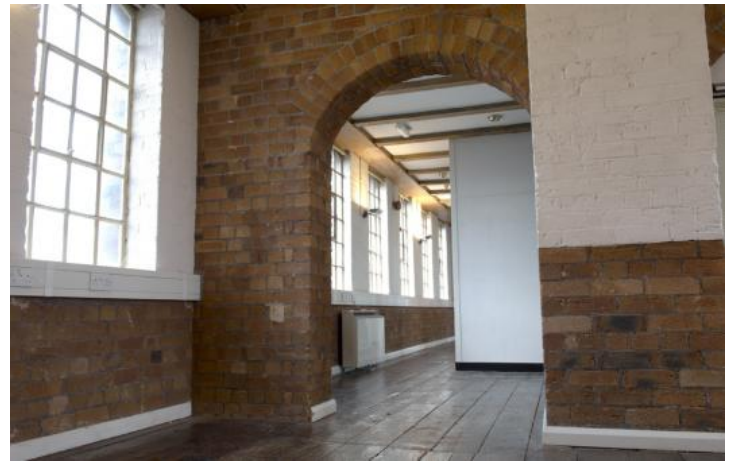
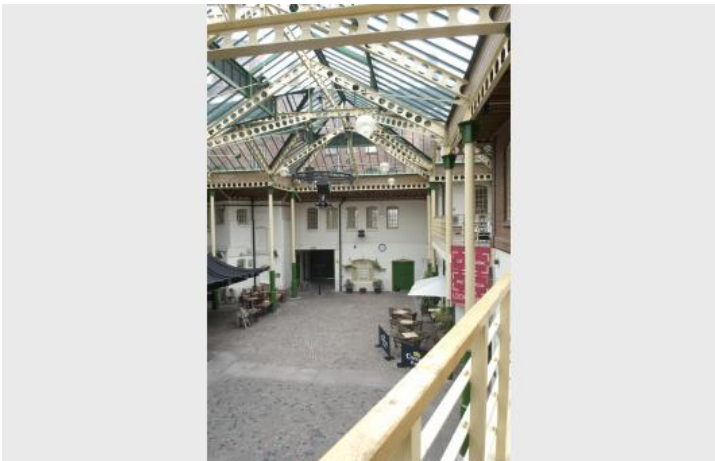
or MIA Ltd 0121 233 2232

## Further Information

See further brochure downloadable from property page

Subject to contract

Additional Images



Additional Images

