



Commercial Property Agents | **01902 425646**

6 Waterloo Road
Wolverhampton, WV1 4BL



Kenant Chambers, 2 Bath Avenue, Wolverhampton, WV1 4EG

FOR SALE

OFFICES

Size
3,276 sq ft (304 sq m)

Purchase Price
£315,000

<http://www.michaeltromans.co.uk/qmlink3234>

Location

The property is located in a prominent location overlooking Wolverhampton ring road, on the edge of the city centre

Description

The property comprises a detached, purpose built, office building arranged over three storeys, and provided with a terrace area to the front and car park and external stores to the rear and car park

The property benefits from a passenger lift and central heating

Accommodation

Ground Floor 791 sq ft

First Floor 1000 sq ft

Second Floor 1071 sq ft

External store 414 sq ft

Approx 6 car parking spaces to the rear

Occupancy

The second floor is occupied by a recruitment company, holding over at a rent of £5500pa and paying a separate service charge

Business Rates

The property has a variety of rating assessments

Ground floor and part first RV £12500

Part first floor RV £ 4900

Second Floor RV £10250

EPC

E

Price

£315000

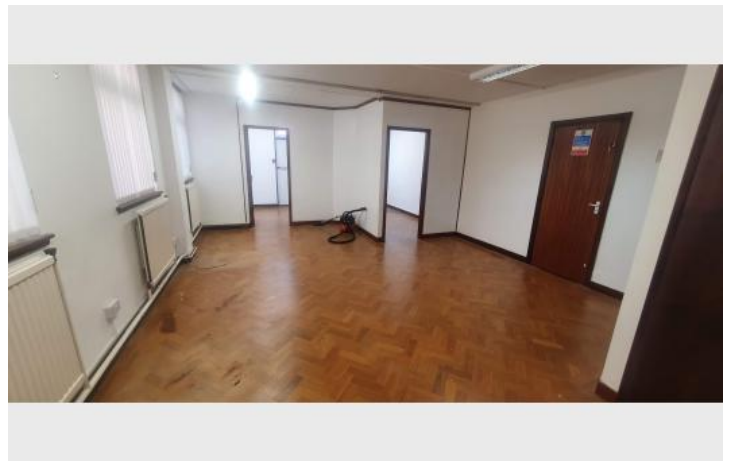
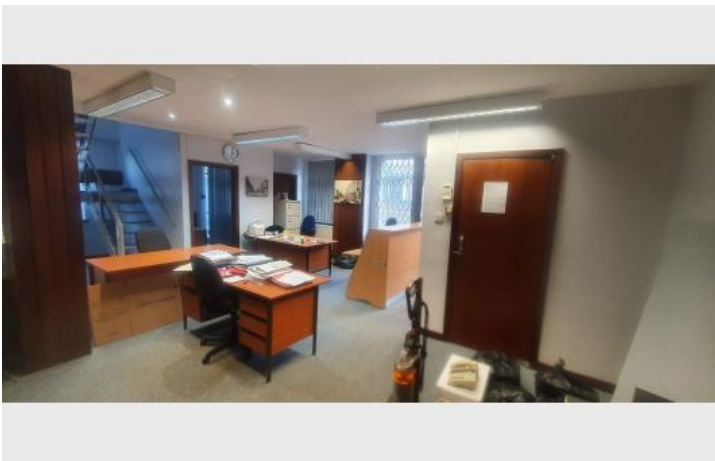
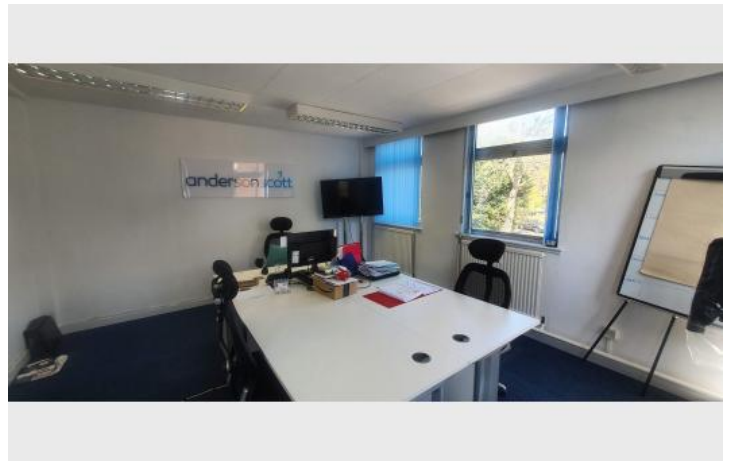
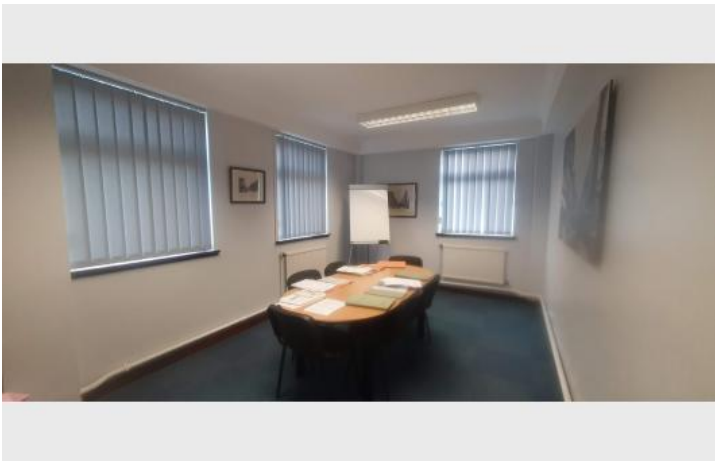
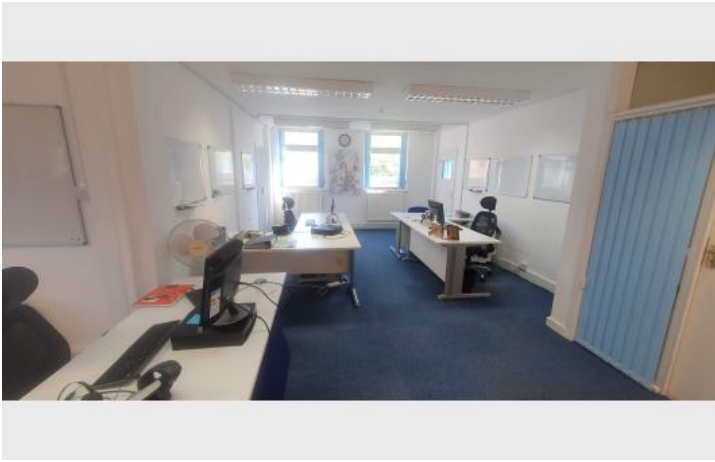
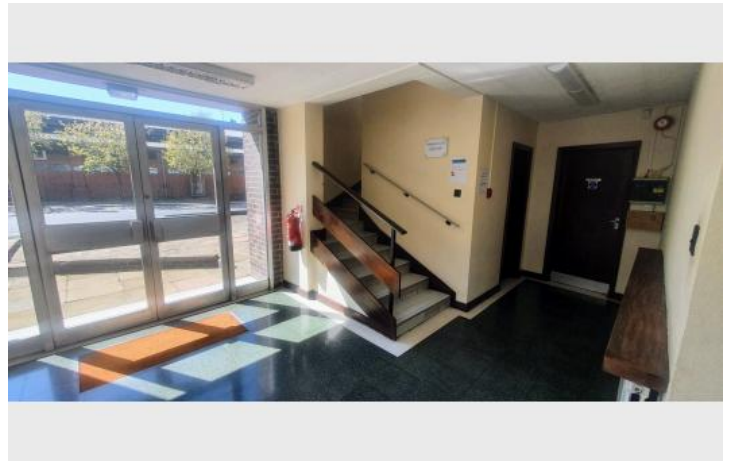
VAT

Does not apply

Viewing

By appointment with Michael Tromans & Co

Additional Images



Additional Images

