



Blossoms Fold, Wolverhampton, WV1 4HJ

TO LET

OFFICES

Size
653 sq ft (61 sq m)

Rent
£6,000

- * A building of 'Townscape Merit'
- * Quaint, self contained office building.
- * Cellular office accommodation over

Location

The offices are located to the rear of Rudells, off Darlington Street, which is one of the main routes/bus routes into the City.

Blossoms Fold is a pedestrian street which connects Darlington Street and North Street (a short cut to the Civic Centre).

Nearby occupiers include The Electrolysis Centre and North Street Social.

Accommodation

(All areas are approximate)

Ground Floor:

Reception 95ft² 8.8m²

Office 1 40ft² 3.7m²

Office 2 190ft² 17.7m²

First Floor:

Office 1 95ft² 8.8m²

Office 2 43ft² 4m²

Office 3 190ft² 17.7m²

2 WC's

Rent

£6000 per annum exclusive

New lease available on negotiable terms.

VAT

Will apply.

Business Rates

Rateable Value: £3,950.00

Interested parties are advised to make their own enquiries with the local rating authority to verify the above.

Small Business Rates Relief may be available.

EPC

tba

Viewing

By arrangement with the agents:

Michael Tromans & Co

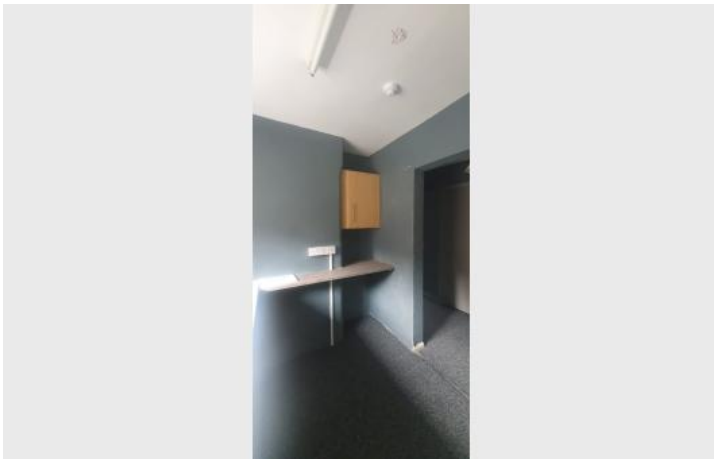
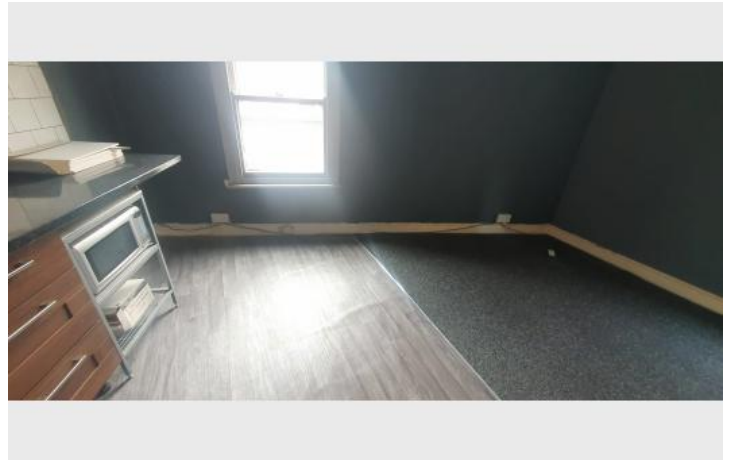
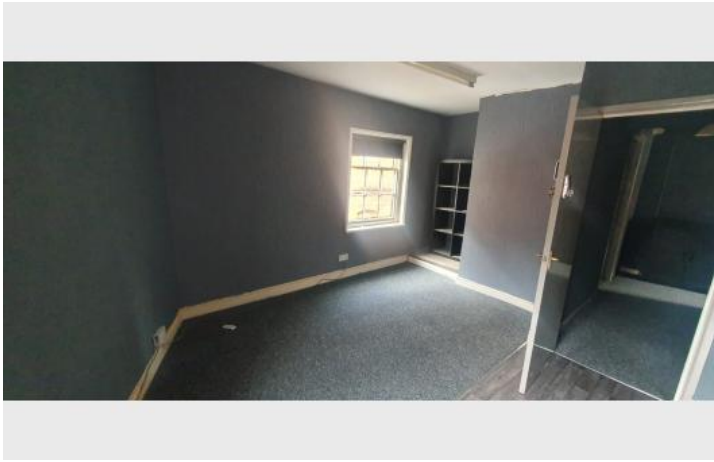
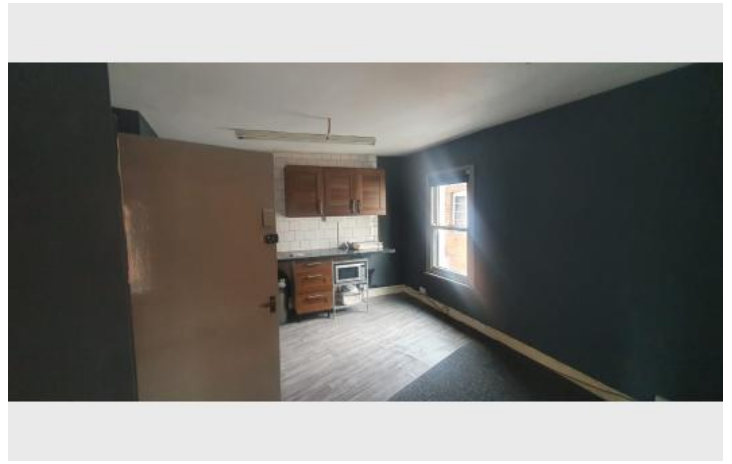
Tel: (01902) 425646

Email: tromansandco@aol.com

Subject To Contract

MRT/SC/01-12-2023

Additional Images



Location Map



