



Commercial Property Agents | **01902 425646**

6 Waterloo Road  
Wolverhampton, WV1 4BL



87a Darlington Street, Wolverhampton, WV1 4EX

**TO LET**

RETAIL & LEISURE

**Size**  
767 sq ft (71 sq m)

**Rent**  
£NOW LET

<http://www.michaeltromans.co.uk/qmlink3023>

## Location

The property is located close to the main shopping core of Wolverhampton city centre opposite the Beatties development.

## Description

The property previously traded as a cafe but may suit future use as an office, winebar or display.

## Accommodation

Sales 306 sq ft

Upper sales 281 sq ft

External store 86 sq ft

## Rent

£12500pa

This shop has now been LET and is no-longer available.

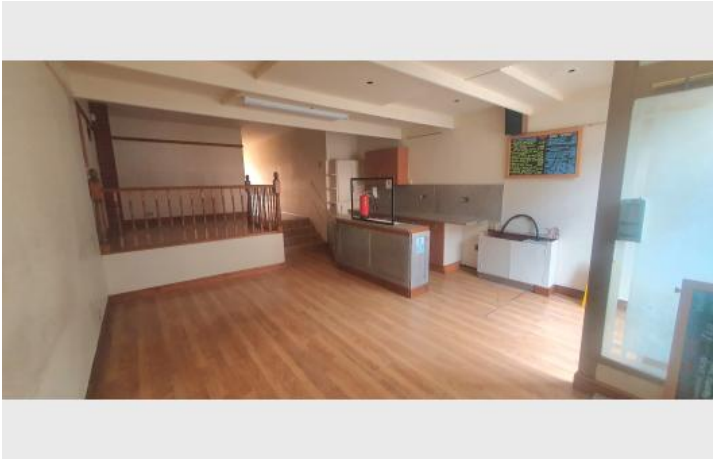
## VAT

May apply

## Business Rates

Rateable Value £8600

## Additional Images



## Location Map

