



Commercial Property Agents | **01902 425646**

6 Waterloo Road
Wolverhampton, WV1 4BL



8 Trysull Road, Wolverhampton, WV3 7HT

FOR SALE

RETAIL & LEISURE

Size
1,352 sq ft (126 sq m)

Purchase Price
£Under Offer

<http://www.michaeltromans.co.uk/qmlink3089>

Location

The property is located in a popular neighbourhood centre a mile to the west of Wolverhampton centre

Nearby occupiers include Tesco Express and various independent shops and services

Description

The property comprises a ground floor shop and first floor ancillary space

The property traded until recently as a 'Boots' pharmacy

Accommodation

Ground Floor

Sales 729 sq ft

Stores 56 sq ft

First Floor

Office 1 145 sq ft

Office 2 145 sq ft

Office 3 76 sq ft

Office 4 105 sq ft

Kitchen 96 sq ft

WCs

Price

£235000

VAT

May not apply

Business rates

Rateable Value £10250

EPC

B

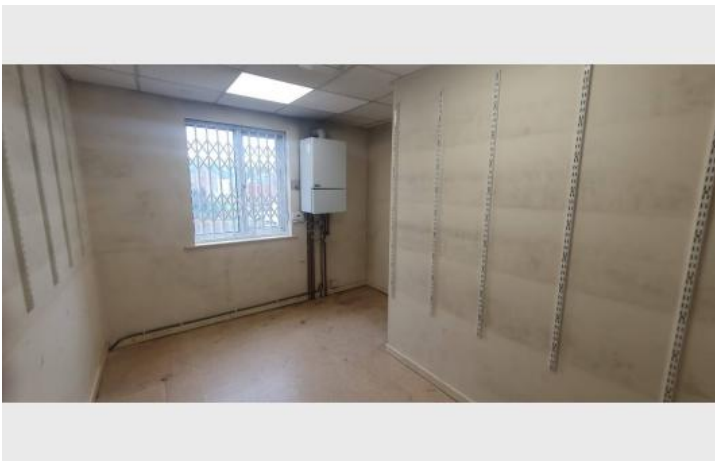
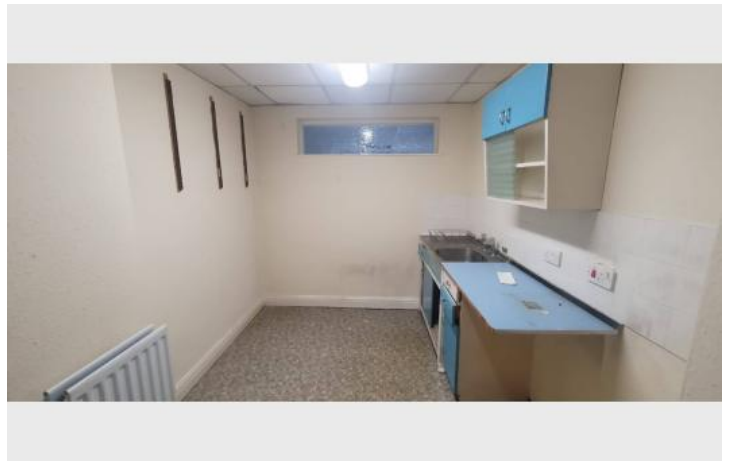
Possession

The property is presently subject to a lease to Boots expiring March 2025.

Viewing

By appointment

Additional Images



Location Map

