



62a Victoria Street, Wolverhampton, WV1 3NX

## TO LET

RETAIL & LEISURE

**Size**  
2,829 sq ft (263 sq m)

**Rent**  
£NOW LET

Three storey shop

Established retail location

Near House of Fraser

## Location

The shop is located in a central shopping street within the city centre.

Nearby occupiers include Waterstones, Pizza Hut and Beatties.

## Description

Extensive accommodation over three floors, with a service road to the rear

## Accommodation

Shop	943ft <sup>2</sup>
First Floor	1040ft <sup>2</sup>
Basement	846ft <sup>2</sup>
Total	2829ft <sup>2</sup>

## Rent

£17,500 per annum exclusive

## Lease

New lease available

## VAT

Will be charged as appropriate

## Business Rates

RV £25250

Payable £11892

Interested parties should verify the above with the local authority.

75% Retail Relief may apply.

## EPC

D

## Viewing

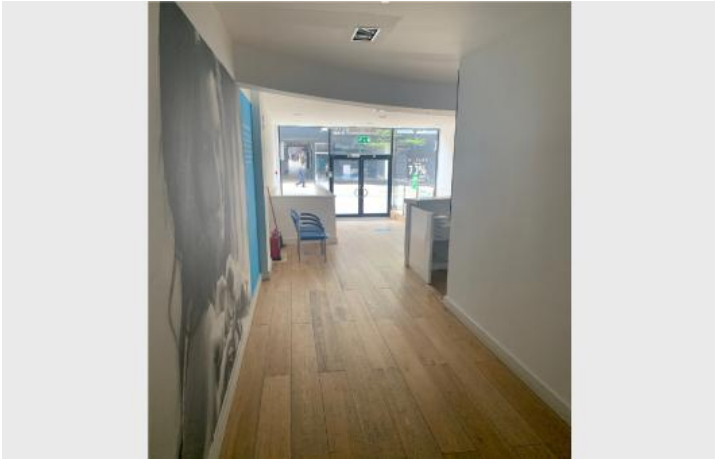
By arrangement with Michael Tromans & Co

01902 425646

tromansandco@aol.com

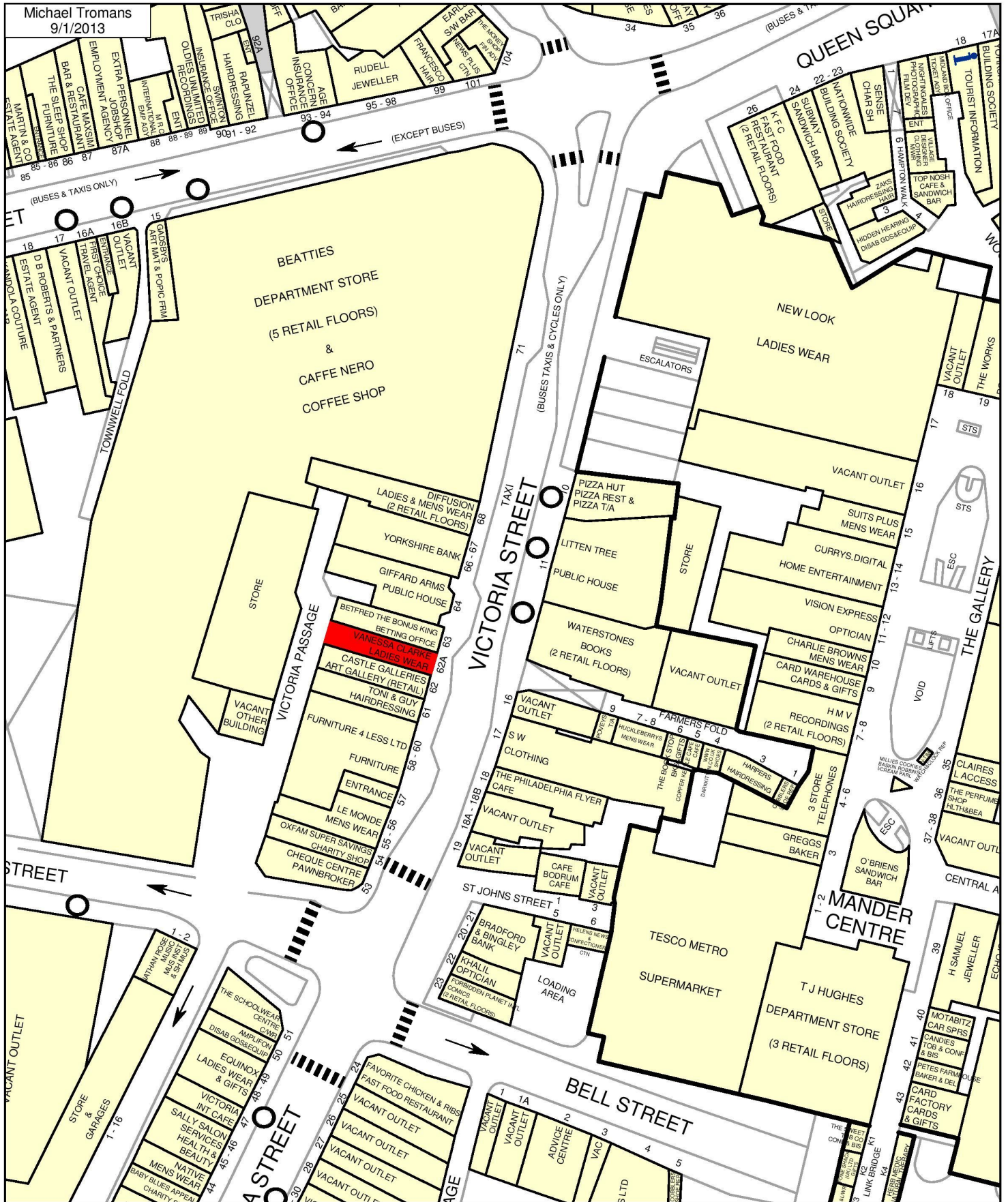
subject to contract

Additional Images



# Location Map





50 metres

goad  
plans.co.uk

For more information on our products and services:

[www.goadplans.co.uk](http://www.goadplans.co.uk)

0845 6016011

[goad.sales@uk.experian.com](mailto:goad.sales@uk.experian.com)

**COPYRIGHT AND CONFIDENTIALITY NOTICE**  
2012 Experian Ltd All Rights Reserved

This product includes mapping data licensed from Ordnance Survey® © Crown Copyright 2012. Licence number PU 100C17316.

Mapping sourced from Ordnance Survey

For full terms & copyright conditions visit [www.goadplans.co.uk](http://www.goadplans.co.uk)

**MICHAEL TROMANS & Co.**

SURVEYORS, ESTATE AGENTS & VALUERS

01902 425646