



33a High Street, Wall Heath, Kingswinford, DY6 0HB

TO LET

RETAIL & LEISURE

Size
609 sq ft (57 sq m)

Rent
£10,000

Location

The property is located in the district centre of this affluent village in a prominent position in this parade of shops.

Nearby traders include Coop Food and William Hill

Description

The property comprises a double fronted shop together with additional office areas

Accommodation

Shop	365sq ft
Office	190sq ft
Kitchen	54sq ft
Total	609sq ft

Lease

The property is available on a new lease on terms to be agreed.

Rent

£10,000pa per annum exclusive

Business Rates

Rateable Value £5500

Interested parties are advised to make their own enquiries with the local rating authority to verify the above.

100% small business rates relief may apply.

VAT

Will be charged.

EPC Rating

TBC

Viewing

By arrangement with the agents:

tromansandco@aol.com

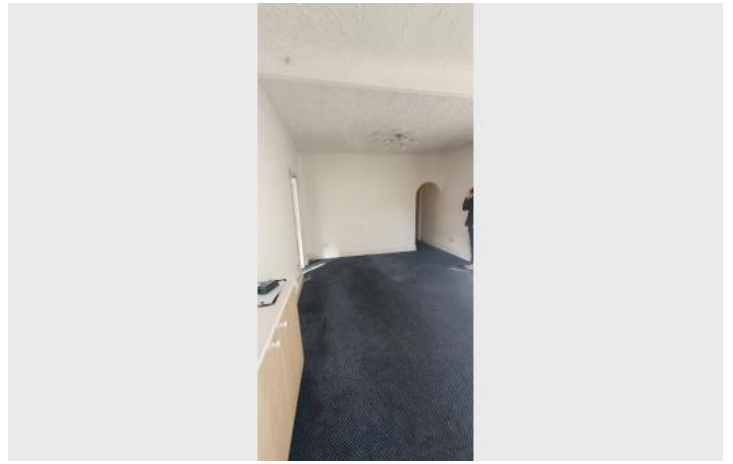
Michael Tromans & Co

Tel: (01902) 425646

Subject To Contract

SC/14/04/25

Additional Images



Location Map

