



228 Cannock Road, Wolverhampton, WV10 0AL

FOR SALE

RETAIL & LEISURE

Size
5,780 sq ft (537 sq m)

Purchase Price
£SALE AGREED

0.3 acre plot

Commercial 5780 sq ft

3 bed self contained flat

Location

The property is located on the main A460 Cannock Road about half a mile from Wolverhampton city centre

Description

The property is presently run as a builders merchants

The property is presently arranged as a retail area together with a variety of back-of-house areas

There is a self contained flat at first floor

Accommodation

Ground Floor

Includes retail area, stores, offices, kitchen, WC and ancillary areas

Gross internal area 5780ft²

First Floor

Three bedroom self contained flat

Outside

Car parking area and servicing

Total site area, approx 0.3 acres

Price

£475000

SALE AGREED

VAT

Does not apply

EPC

C

Business Rates

Rateable Value £11,750

The flat has a council tax rating of Band A

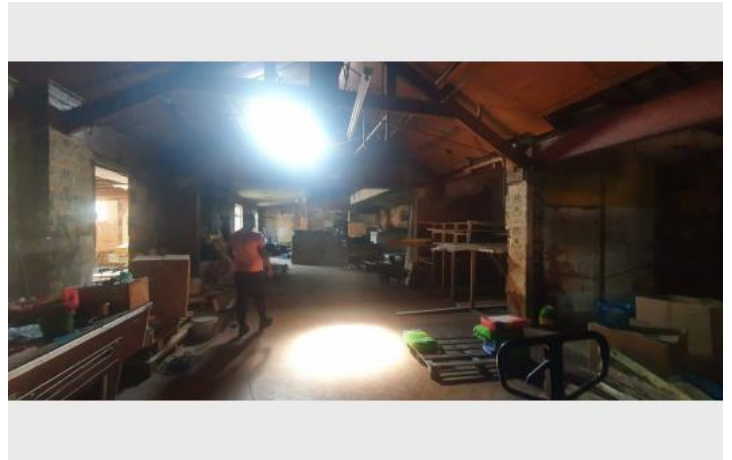
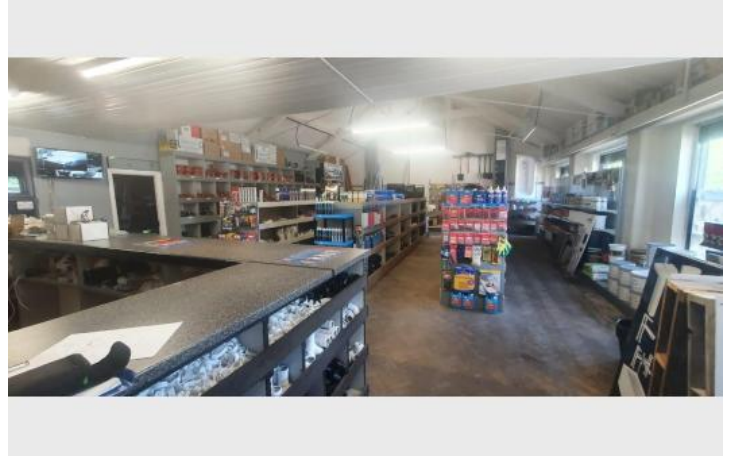
Possession

The property is offered with vacant possession

Viewing

By arrangement with Michael Tromans & Co 01902 425646

Additional Images



Location Map

