



2 Bath Avenue, Wolverhampton, WV1 4EQ

## TO LET

OFFICES

**Size**  
1,266 sq ft (118 sq m)

**Rent**  
£11,000

Close to city centre

Car parking

Lift access

## Location

The property is located just outside of Wolverhampton city centre in a professional district

## Viewing

By arrangement

## Description

Purpose built office building, with central heating, a lift and car parking nearby.

The available suite comprises a mixture of private offices and open working areas spread over ground and first floor

## Accommodation

Ground Floor 730 sq ft

Provides open office, 3 private offices, strong room, kitchen, 2 x WCs

First Floor 536 sq ft

Provides three offices

Total 1266 sq ft

## Car Parking

3 car parking spaces

## Rent

£11000pa

## Business Rates

Rateable Value £10500

## VAT

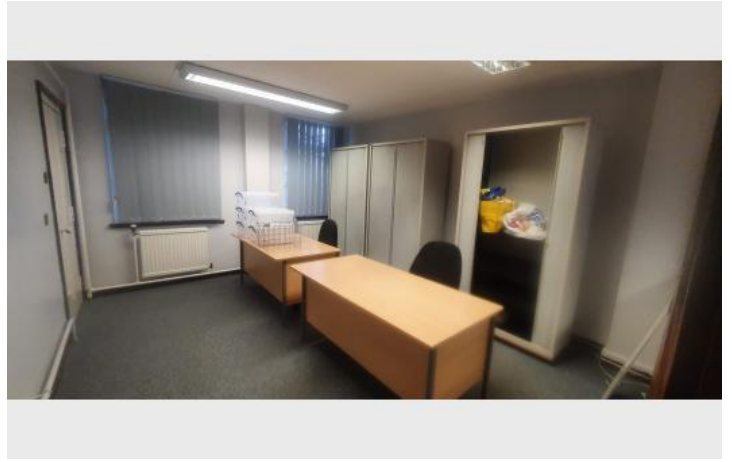
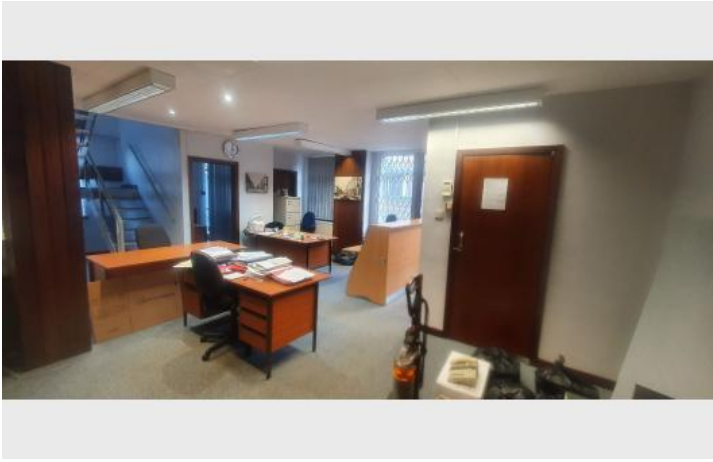
May apply

## Service Charge

Will Apply

MISREPRESENTATION ACT 1967: Michael Tromans & Co. for itself and for the vendors or lessors of this property whose agents they are give notice that are a general outline only for the guidance of intending purchasers or lessees, and do not constitute an offer of contract. All descriptions and any other details are given without responsibility and any intending purchasers or tenants should not rely on them as statements or representations of fact but must satisfy themselves by inspection or otherwise as to the correctness of them. No employee of Michael Tromans & Co. has any authority to make or give any or warranty whatever in relation to this property.

## Additional Images



Location Map

