



Former Hewmor Products Ltd, Spring Road, Wolverhampton,

TO LET

INDUSTRIAL & WAREHOUSE

Rent
£120,000

Prominent location

Large site

Location

The property is located on the A4126 Spring Road, close to its junction with Parkfield Road and Millfields Road. Wolverhampton city centre is approximately 2.5 miles to the north west and a short distance from the Black Country Route which, provides excellent access to the Midland's motorway network.

Description

The property comprises a two storey block to the front with ground floor workshops and offices above. The offices are mainly open plan and benefit from airconditioning and double glazing with boardroom, kitchen and W.C.'s to one end. To the rear are two large portal frame bays with an eaves height of 4.6m. Running along the northern elevation are staff W.C. facilities, changing rooms and further workshop and storage space. To the rear of the property is a further 2 storey block providing covered loading bay with roller shutter access (5m high x 4m wide), workshop / store space and further storage at 1st floor level. The property has the benefit of a 200amp and 100amp electricity supply.

The property sits on a site of approximately 1.7 acres, with the main yard accounting for approximately 0.7 acres. There is ample parking to the front of the site for staff and visitors. Access is off Spring Road Industrial Estate via an electric sliding barrier, with the perimeter secured by pallisade fencing.

Accommodation

Approximate Gross Internal Areas

Office block	398.66sq.m	4,291sq.ft
Main bays	1,688.78sq.m	18,178sq.ft
Side bay	666.01sq.m	7,169sq.ft
Loading bay	483.98sq.m	5,209sq.ft
Total	3,237.43sq.m	34,847sq.ft

Rent

£120,000 per annum, exclusive

Term

A new lease for a term to be agreed on a full repairing and insuring basis

VAT

VAT will be charged.

Business Rates

Rateable Value £72,000

EPC

EPC = E - 108

Viewing

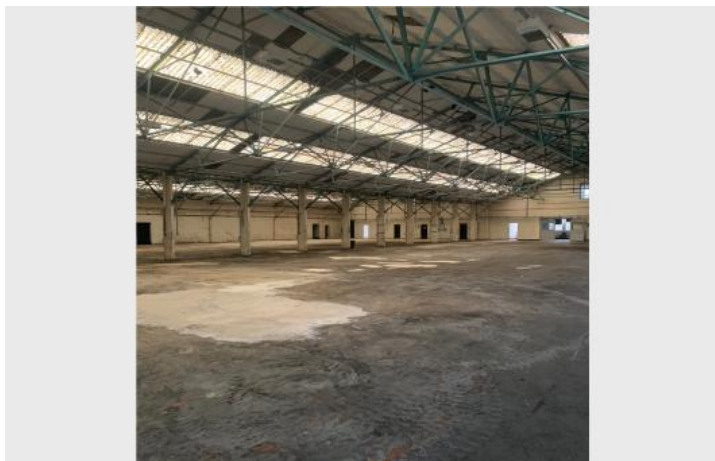
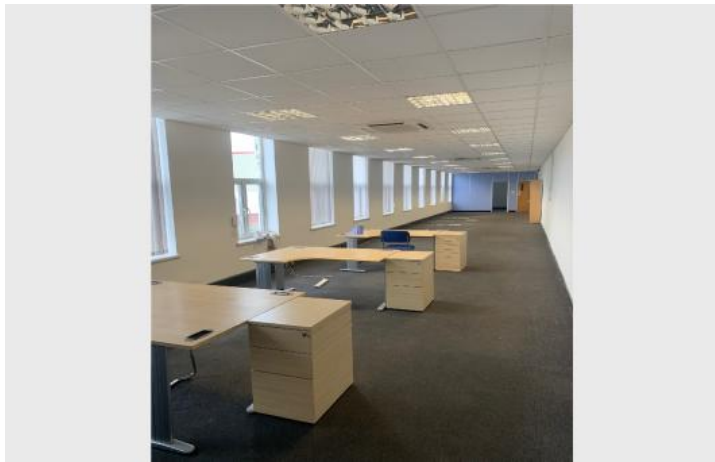
Strictly via arrangement with Michael Tromans & Co LLP

Subject to Contract

JS/ SC - Sept23

MISREPRESENTATION ACT 1967: Michael Tromans & Co. for itself and for the vendors or lessors of this property whose agents they are give notice that are a general outline only for the guidance of intending purchasers or lessees, and do not constitute an offer of contract. All descriptions and any other details are given without responsibility and any intending purchasers or tenants should not rely on them as statements or representations of fact but must satisfy themselves by inspection or otherwise as to the correctness of them. No employee of Michael Tromans & Co. has any authority to make or give any or warranty whatever in relation to this property.

Additional Images



Location Map



