

The Chubb Buildings

Fryer Street, Wolverhampton WV1 1HT

Wolverhampton's most innovative business and media centre.

*Not just an Iconic Building, **Modern office suites from 813 to 1371 sq ft To Let***

Central and highly accessible location, The Chubb Buildings central location, just off the ring road, on the approach to the new bus and mainline railway station and opposite The Grand Theatre and Victoria Hotel is a further advantage, making the area a fashionable location.

A substantial amount of other commercial development is taking place in and around the site making it an integral part of the exciting regeneration of Wolverhampton Interchange

The building has a unique mix of businesses where people come to both relax and work.

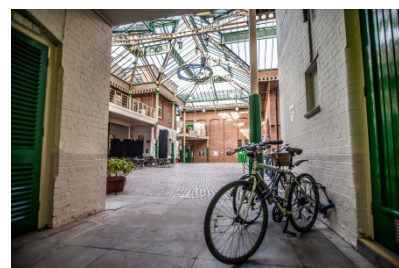
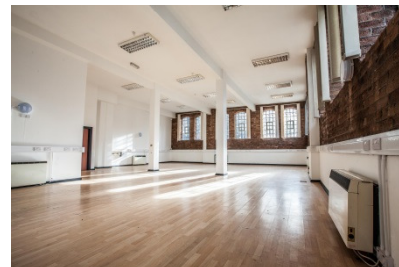
The best of the original character of The Chubb Buildings is preserved and enhanced within a sensitively implemented and modernised improvement scheme backed by Midlands Industrial Association, Wolverhampton City Council and the Light House Media Centre.

Our Monthly Charges on Licence Agreements are inclusive of Service Charges, there are no other charges from us to you.

Moving to The Chubb Buildings you will be part of like minded people.

If things don't work out for you, you are free to give just one months Notice to Quit.

- *Special rates for New Start and relocating businesses*
- *Immediately available on monthly inclusive Licence (lease available if required)*
- *WV1 central Wolverhampton address, minutes walk to main line rail*
- *24/7 access*
- *Full time on site caretaker*
- *On site car parking with your own reserved space*
- *On site LOCKWORKS cafe/bar*
- *Broadband – by OOSHA Superfast, reliable internet connection readily available*



All Enquiries to :-

Prince Warnes Properties Tel 0121 200 2210

direct@prince-warnes.com

<https://www.officestoletwolverhampton.co.uk/>



Broadband (ADSL), Lease lines of 10mb,
100mb and up to 1GB with Installation in 7 days
<https://www.oosha.co.uk/>



Cafe/Bar