



81 Prestwood Road West, Wolverhampton, WV11 1HT

**FOR SALE**

DEVELOPMENT SITES / YARDS

**Size**  
4,265 sq ft (396 sq m)

**Purchase Price**  
£SOLD

## Location

The property is located in a popular residential district, about half a mile from Wednesfield district centre

## Description

The property entails a former doctors surgery

The property comprises a two storey detached building with surrounding grounds and car parks to front and rear

The property provides largely cellular accommodation at present although it may be possible to reconfigure

The property has a central heating system (not tested)

## Accommodation

Approximate gross internal areas

Ground floor 3420 sq ft (presently 14 rooms)

First floor 845 sq ft (presently 3 rooms)

Total 4265 sq ft

On site car parking for in the region of 26 cars

Site area circa 0.38 acre

## Business Rates

RV £14750

## EPC

D

## Price

£475,000

SOLD

## VAT

May apply as appropriate

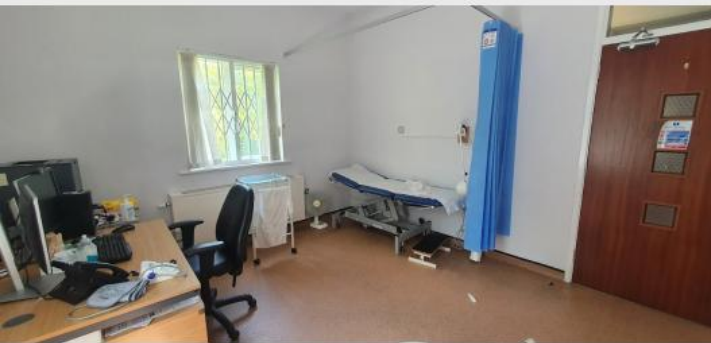
## Viewing

Strictly by prior appointment

## Images

The red line plan does not intend to show the exact boundary of the property, but is for the purpose of identifying the property

## Additional Images



# Location Map

