



Commercial Property Agents | **01902 425646**

6 Waterloo Road  
Wolverhampton, WV1 4BL



Office Suites, Chubb Buildings, Fryer Street, Wolverhampton,

**TO LET**  
OFFICES

Rent  
£ROA

Landmark building

Monthly licence

Close to bus/rail stations

<http://www.michaeltromans.co.uk/qmlink2131>

## Location

Overlooking Wolverhampton ring road, adjacent to the bus station and opposite the railway station.

## Description

Conversion of character landmark building to high class offices. The site also houses the lighthouse cinema and a bar and cafe.

## Accommodation

### Ground Floor

Suite 2 1373 sq ft

### Second Floor

Suite 27 833 sq ft

### Fourth Floor

K11 613 sq ft

## Monthly Licence Fee

### Ground Floor

Suite 2 £2473 pcm

### Second Floor

Suite 27 £1663 pcm

### Fourth Floor

K11 £1225 pcm

## Business Rates

Rateable Value Suite 2 £12500

Rateable Value Suite 27 £8500

Rateable Value Suite K11 £6300

If you qualify for small business rates relief then you may be able to obtain significant relief from rates charges. Interested parties should verify all the above with the local authority.

<https://www.gov.uk/apply-for-business-rate-relief/small-business-rate-relief>

## Lease / Licence

The units are available on monthly license or lease terms

## VAT

License Fees are subject to VAT, in addition

## Viewing

By arrangement through:

Michael Tromans & Co 01902 425646

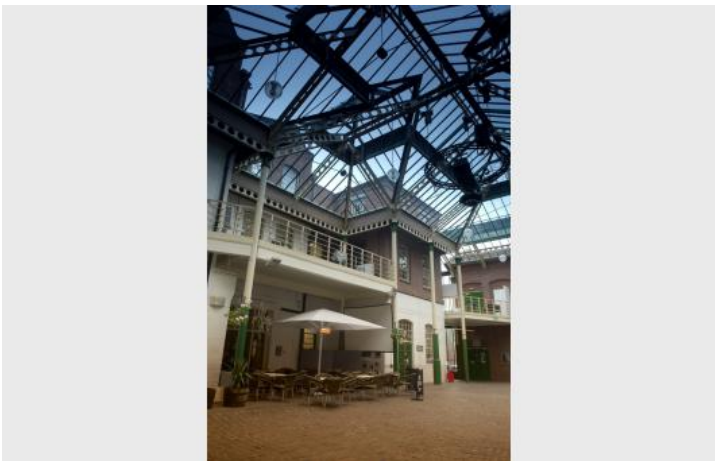
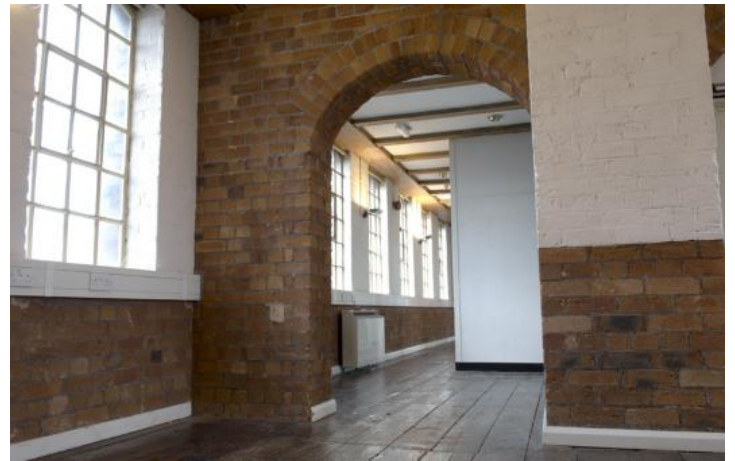
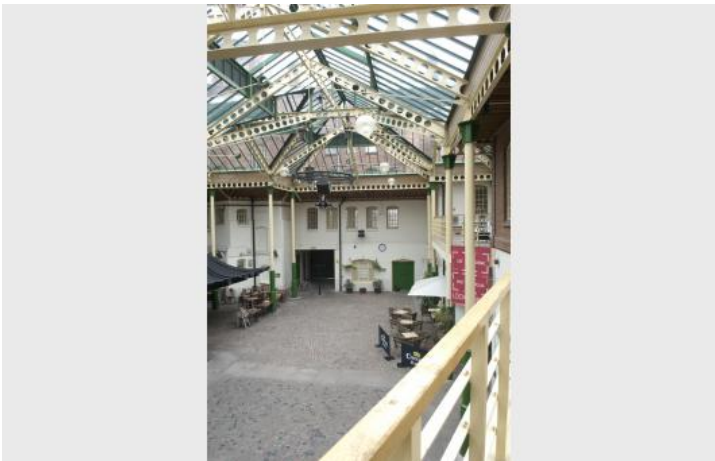
tromansandco@aol.com

or Prince Warnes Property 0121 200 2210

or MIA Ltd 0121 233 2232



Additional Images



Additional Images

